

# We owe ourselves better



# Solid waste system training

Trash – recycle – compost – other solid wastes

13 August 2019

Tom Beirne

Solid Waste Program Manager, Aviation Utility

[beirne.t@portseattle.org](mailto:beirne.t@portseattle.org)



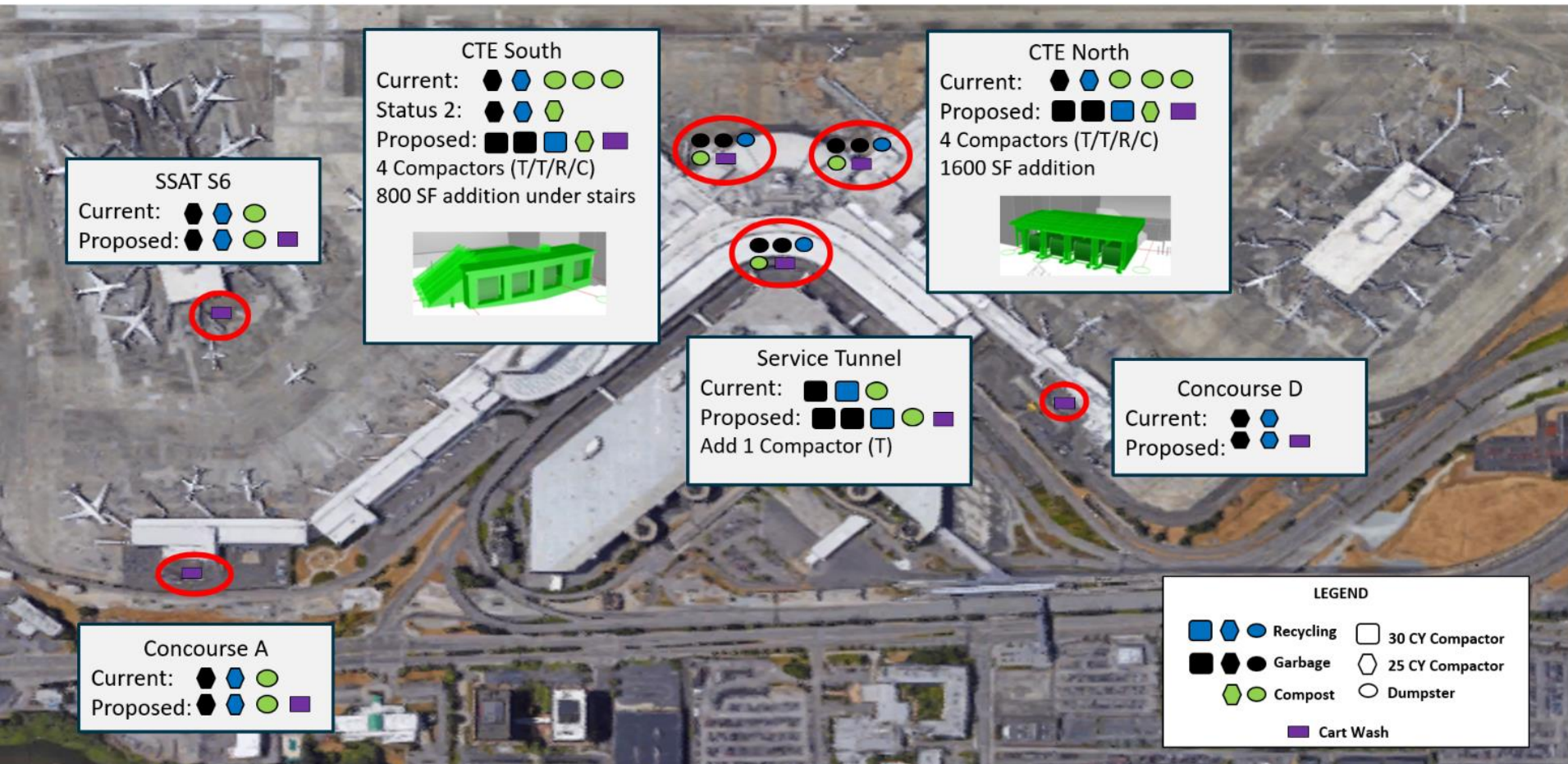
# Program Updates

- Used Cooking Oil tanks (9 of 10)
  - D Concourse Q3 2019
  - New contract: PM and on-call repair
- Terminal Solid Waste Project
  - Adds cart washing stations
  - Adds compactors to CT-N, CT-S, Service Tunnel
  - Regrade/Redrain, enclosed, odor control
- CT-N / CT-S floors
- Standardize compactor signage & controls

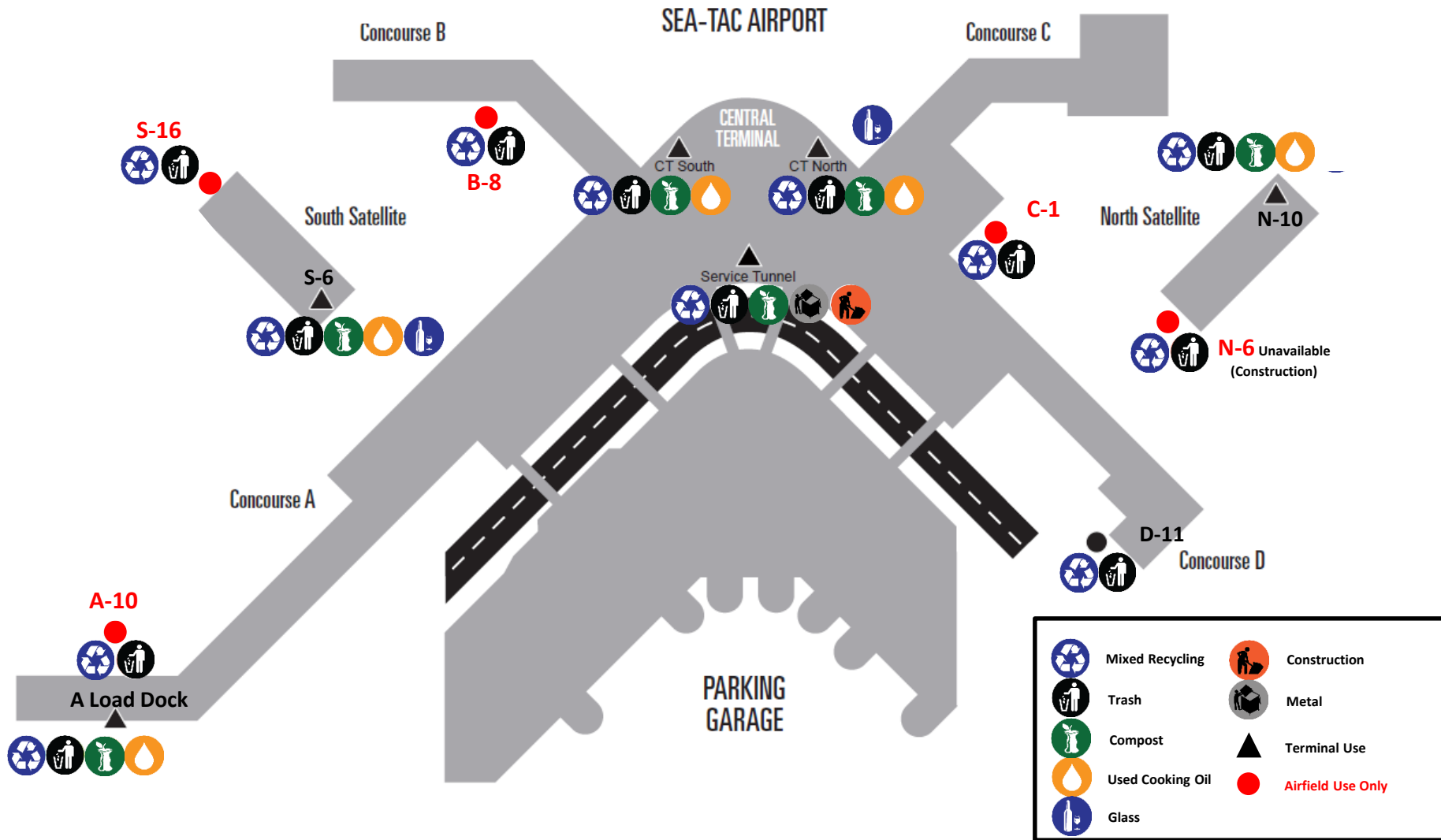
**Safety. Capacity. Sanitation.**



# Program Updates



# Accepted Materials



# Compactors & Dumpsters



Trash  
Black



Recycling  
Clear



Construction

- Construction Users Only
- Requested through project manager



Compost  
Green



- Approved by Cedar Grove:  
[www.cedar-grove.com/compostable/accepted-items/bags](http://www.cedar-grove.com/compostable/accepted-items/bags)



Metal

- At Service Tunnel  
Snowshed, Air Cargo  
1 and 4



Glass Dumpster

- If no dumpster, use Recycling compactor
- Do not throw (safety/FOD)

*City of SeaTac jurisdiction:  
Must use Recology for Trash and  
Recycling for hauling*

Maintenance issue or Full: **ACC at 787-5229**

*For bulky objects or items not categorized above, contact AV Environmental at 787-4633*

# Other Materials

APHIS-USDA Regulated waste per 7CFR§330.400 & 9CFR§94.5

International deplaned waste = tenant responsibility

***MUST be brought***

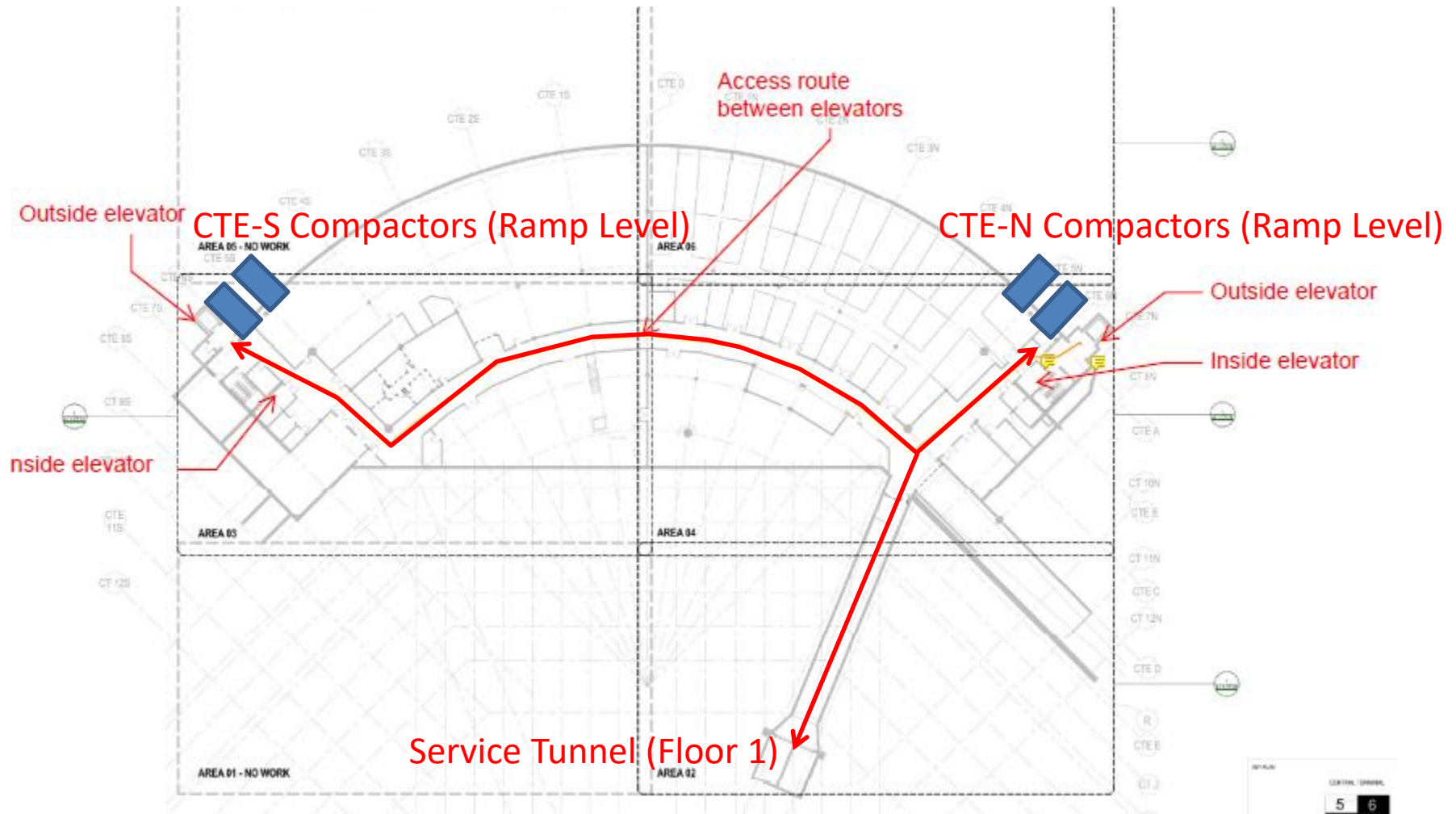
“...to an approved facility for incineration, sterilization, or grinding  
into an approved sewage system.”

Jeffrey Norton  
*Waste Management*

NW regional Manager  
360-913-4877  
[jnorton1@wm.com](mailto:jnorton1@wm.com)



# Basement Level Routes



You need access  
Service tunnel door:



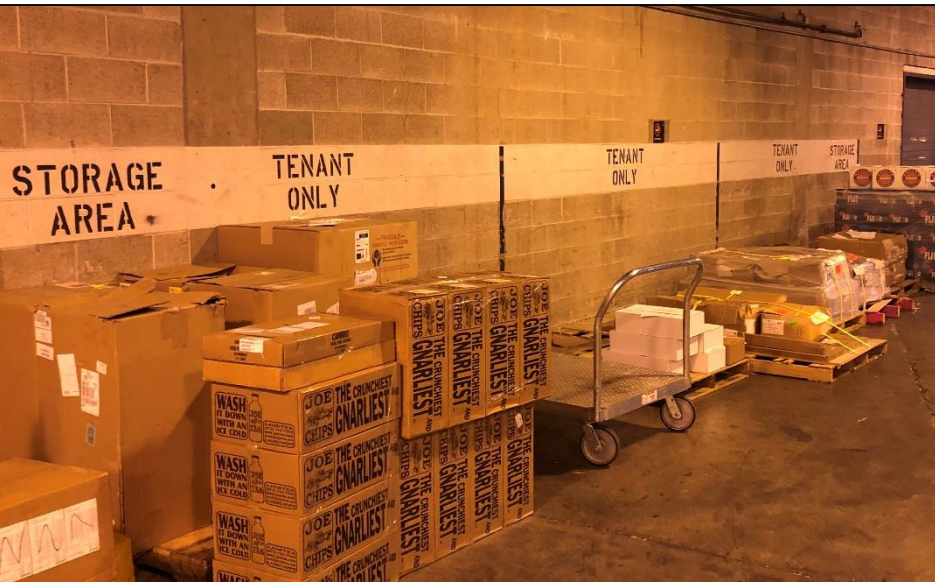


# Basement Level Routes



# Deliveries


- Shipping material responsibility
- Pallets: leave one, take one
- Storage at dedicated locations
  - ADR Cages
  - Service Tunnel
  - Direct tenant leased space



# Trash and Recycling




 No Appliances

 No Recyclables

 No Furniture

 No Pallets or Kegs


 No Batteries

 No Electronics

Do you know  
what to do with  
this?


 **ALUMINUM /TIN CANS**  
(bagged)

 **CARDBOARD**  
Break down boxes

 **PLASTIC** Bottles, containers (bagged)  
bubble wrap, stretch film

**PLASTIC FILM:**  
No longer accepted

 **PAPER** Magazines, newspaper  
office paper, shredded paper (bagged)

 **GLASS** Unless there is a separate  
bin for glass you may recycle it here

# Not accepted at Airport

## *Tenant Responsibility*

### Electronic Scrap

*Small appliances, microwaves, TV's, computers*

King County Take-it-back network

<https://kingcounty.gov/depts/dnrp/solid-waste/programs/take-it-back/electronics.aspx>

<https://www.totalreclaim.com>

### Universal Waste

*Batteries, lightbulbs, equipment with mercury*

<https://www.ecolights.com>

<https://www.totalreclaim.com>

### HAZMAT

*Paints, broken light bulbs, cleaners, solvents*

<https://kingcounty.gov/depts/dnrp/solid-waste/facilities/hazardous-waste.aspx>

### CFC Containing Appliances


*Refrigerators, water coolers*

<https://www.totalreclaim.com>

Large objects? Questions?  
Aviation Environmental 206-787-4633



# What do I do with....

 **King County**

Search Kingcounty.gov


[Home](#) [How do I...](#) [Services](#) [About King County](#) [Departments](#)

**Solid Waste Division**

What do I do with...?

Search

Materials list



[Home](#) [Services](#) [Recycling & garbage](#) [Solid Waste Division](#) [What do I do with...?](#) [Materials list](#)

## Materials list

Select one or more materials to find a list of businesses and organizations that will accept your unwanted materials for reuse, recycling, or disposal.

**Animal Waste**

**Appliances**

**View selected materials**

☒ **REFRIGERATORS, FREEZERS**  
Appliances used for cooling or freezing foods.

☐ **AIR CONDITIONERS, HEAT PUMPS**  
An air conditioner is a mechanical refrigeration device used to control temperature, humidity, cleanliness, and movement of air in a confined space. A heat pump is an outdoor air conditioning unit capable of either cooling or heating an indoor space.

☒ **OTHER MAJOR APPLIANCES**  
Refrigerators, freezers, stoves (kitchen range or oven), hot water heaters, furnaces, washers, dryers and other major appliances sometimes referred to as "white goods."

☐ **SMALL HOUSEHOLD APPLIANCES**  
Small household appliances include items such as blenders, coffee pots and irons.

☒ **MICROWAVES**  
Microwave ovens are kitchen appliances used to heat food and drinks.

**Asbestos**

**Batteries**

**Carpet**

# Disposal Room Rules

*How does it impact me?*

1. Compactor Doors – CLOSED
2. Sort and Dispose into CORRECT containers
3. Dumpster Lids – CLOSED
4. All compactor users: TRAINED on operation
5. No compactor users under 18 years
6. Clean up all – SPILLS and LITTER
7. Dumping PROHIBITED
  - a) on ground
  - b) outside designated containers



Stash your trash

# Compactor Operation (1 of 4)

*(Trash, Recycling)*

Load Dock

<https://youtu.be/cYknLkfSO-I>

Airfield and Central Terminal

<https://youtu.be/FjqHSygrQq8>



# Compactor Operation (2 of 4)

(Trash, Recycling)

## Load Docks

1

Touch Key



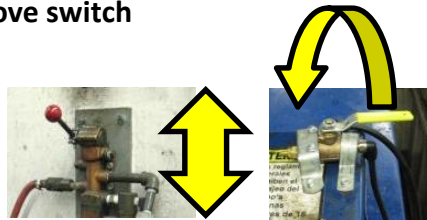
2

Close Gate



3

Move switch



Type 1: up/down

Type 2: rotate

## All other

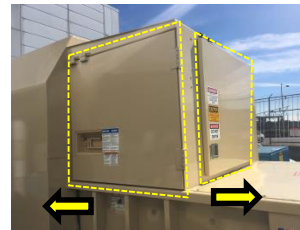
1

Touch Key



2

\*Open/Close



\*Ensure slide latch is CLOSED

## TROUBLESHOOTING

Check emergency stop is out



**STOP!**



PRESS

Maintenance issue or Full: **ACC at 787-5229**



# Compactor Operation (3 of 3)

## *Issues*

### **Bridging**

Cardboard raises above the ram.  
Appears full.



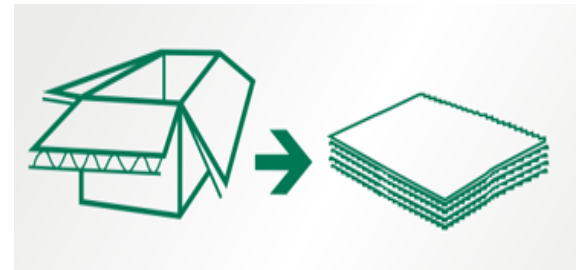
### **Overfilling Hopper**

Hopper too full.  
Material doesn't compact.

### **Solutions**

**Max 5 bags**

**BREAK DOWN** boxes  
Run compactor 2x



Maintenance issue or Full: **ACC at 787-5229**

# Key Requests

*Applies to compactors only (trash, recycling)*



- Turnaround
  - Existing accounts: 1-2 weeks
  - New accounts: 2-3 weeks
  - Large key orders: 2-3 weeks
- Key Request Form:  
<https://www.portseattle.org/Business/Airport-Tenants/Pages/Compactor-Access.aspx>
  - Requires Port account number (contact ADR Business Manager, Properties or PM if unknown)
- Billing
  - Keys cost \$20 each
  - Recycling compactor access: FREE
  - Billing based on lease or service agreement terms and tariff

**Keys must be set up with an account for each tenant or contractor**

# Compost



**Food +  
Compostables**



**Green Bags ONLY**

Food scraps, paper towels, green-waste,  
compostable packaging, and other  
compostable materials



**NO BLACK BAGS, GARBAGE,  
OR RECYCLING**

---

**CLOSE DUMPSTER AFTER EVERY USE**

---

**IF DUMPSTER IS FULL CALL 206 787-5229 (ext.1)**

***Bags must be approved by Cedar Grove:***  
[www.cedar-grove.com/compostable/accepted-items/bags](http://www.cedar-grove.com/compostable/accepted-items/bags)



SEATTLE-TACOMA INTERNATIONAL AIRPORT

Port  
of Seattle

# AVIATION OPERATIONS BULLETIN

**SAFETY ALERT**

AV-OPS - Safety  
09-13-2018  
Issued By: E. Belleque

## Compost Dumpster Procedures

**Effective: Immediately**

In compliance with the Food & Drug Administration and the WA State Department of Health & Human Services to prevent Foreign Object Debris & Pest hazards, all stakeholders must follow these mandatory procedures when using Compost Dumpsters:

The Compost Dumpster lids SHALL be closed after use. If dumpster lids CAN NOT close completely trash needs to be taken to another dumpster. Employees/Companies NOT following these procedures will be issued a citation.



**FOR IMMEDIATE NOTIFICATION, DISTRIBUTION & COMMUNICATION**  
Please forward to all pertinent parties and staff



# Violations

## *Violates STIA Rules & Regulations #5*

- *Section 3B9d: Maintenance of exitways*
- *Section 4A: Sanitation*
- *Section 5L1: Pest Management*

## *Fines may be levied (Section 4A6)*

- *Up to \$2500 First Offense*
- *Up to \$5000 Second Offense*
- *Plus airport response and admin costs*



# Cooking Oil *Caddy*

## Waste Cooking Oil Transfer

- Caddy System Required (tenant purchase)
- Variable sizes for different fryer design
- **Oil solids go to trash**



***¾ full only***

## Tenant responsibility

- **Purchase and Maintenance** of oil caddy
- Ensure no oil on electric plug
- Wipe off oil before leaving leased space
- Wipe off oil tank quick disconnect after complete
- Clean up or report any spills



**Best practice: oil rags on hand**

# Cooking Oil

## *Safety*



How will you protect yourself?



# Cooking Oil *Safety*

## SAFETY FIRST: PLEASE READ CAREFULLY



### CAUTION

Equipment and Fittings will get HOT. Always wear Personal Protective Equipment (PPE) when operating equipment.



### CAUTION

No Water!! Operating with water will damage the pump.



### CAUTION

Once grease is emptied, run pump for 30 seconds to help prevent grease blockage.



### CAUTION

Always drain oil into the strainer basket to prevent pump damage. Clean the basket out regularly.



### CAUTION

Cold or room temperature grease will damage pump. Run warm or hot oil only.



### CAUTION

Never leave oil in the caddy as the pump and hose could become blocked.



### DANGER

Please read this operation and servicing manual thoroughly before installing, servicing or using this equipment. Failure to properly install, service or use this equipment, or alteration of this equipment, can cause serious property damage, injury or death.



### DANGER

This waste oil pump station unit is intended for use with hot oil and grease at temperatures between 100°F (38°C) and 375°F (190°C). Always wear protective, heat-resistant gloves, heat-resistant apron and goggles when using this equipment. Failure to properly use this equipment can lead to serious injury or death.



### DANGER

The caddy lid is designed to prevent hot oil and grease spills when transporting the caddy. Failure to use the lid or properly secure the lid may result in hot oil and grease spills, which can lead to serious injury or death.

**FRONTLINE**  
international

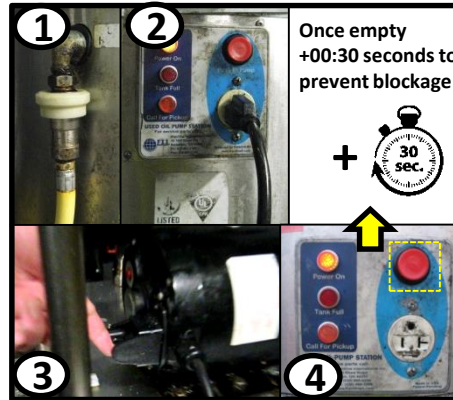
For further assistance  
please call +1 330-861-1100

**SCAN FOR  
INSTALLATION  
MANUAL AND  
OPERATING  
PROCEDURES**



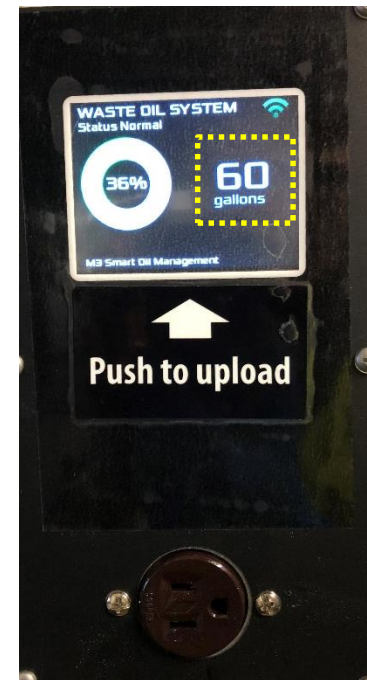


# Cooking Oil Operation



- ① Attach hose
- ② Attach electric plug
- ③ Turn on pump
- ④ Hold button

*New tanks*



Maintenance issue or Full: **ACC at 787-5229**

Operation (5 minute mark): [https://www.youtube.com/watch?v=fzhrm5U\\_d\\_4&t=322s](https://www.youtube.com/watch?v=fzhrm5U_d_4&t=322s)

# Cooking Oil

## Operation

### Troubleshooting

See the following table to troubleshoot problems

| PROBLEM                                | PROBABLE CAUSE  | CORRECTIVE ACTION  |
|--|---|--|
| Caddy motor will not run.              | The caddy motor is not turned ON.                             | Turn the motor ON with the switch located on the back of the motor.  |
|  | Caddy motor reset switch has tripped.                         | Press the motor reset switch on the back of the caddy motor.   |
|  | The caddy power cord is not making proper connection.         | Ensure the caddy power cord is completely plugged into the motor and the control panel receptacle .  |
|  | The tank or control panel at the fill station has lost power. | Ensure the tank or fill station control panel are plugged in.  |
|  |   | Ensure the outlet that the tank or fill station control panel is plugged into has not lost power.  |
|  |   | If there is no power to the outlet make sure the circuit breaker has not tripped or that the outlet is not on a switch that has been turned off. |
| Caddy motor runs but no oil will pump. | Disconnect fittings are not properly connected.               | Make sure the female disconnect fitting is properly connected to the male fitting.   |
|  | Caddy hose may be plugged with grease.                        | Run the caddy hose under hot water to liquefy any grease that may be clogging the hose.  |
|  | Caddy pump may be plugged with grease.                        | Remove the four screws on the front of the pump and clean the inlet and outlet port of the pump, and the rotor gear.                             |
|  |   | Make sure that nothing is blocking the inlet tube that goes down into the oil.   |
|  |   | Assure that the oil being discarded is in liquid state.  |
|  |   |  |

Call 330-861-1100 if you have checked all of the above and the problem still has not been resolved.

# Cooking Oil *Operation*



Maintenance issue or Full: **ACC at 787-5229**

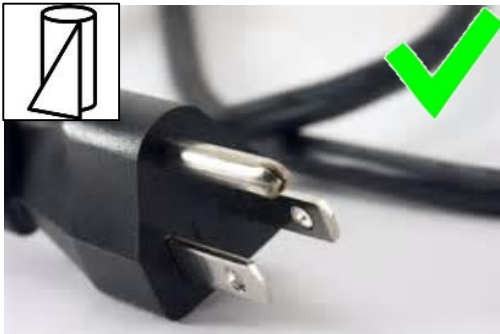
[Training Video:](https://www.youtube.com/watch?v=fzhrm5U_d_4&t=322s)

[https://www.youtube.com/watch?v=fzhrm5U\\_d\\_4&t=322s](https://www.youtube.com/watch?v=fzhrm5U_d_4&t=322s)



# Cooking Oil *Operation*

Keep Plugs  
**CLEAN**



**Dirty Plugs**

**SAFETY:** Shorts, Fires



**Improvised  
Storage**



**PROHIBITED**



Maintenance issue or Full: **ACC at 787-5229**

[Training Video:](https://www.youtube.com/watch?v=fzhrm5U_d_4&t=322s)

[https://www.youtube.com/watch?v=fzhrm5U\\_d\\_4&t=322s](https://www.youtube.com/watch?v=fzhrm5U_d_4&t=322s)

# References

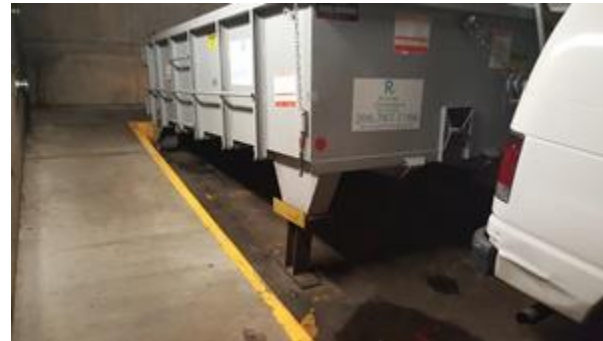
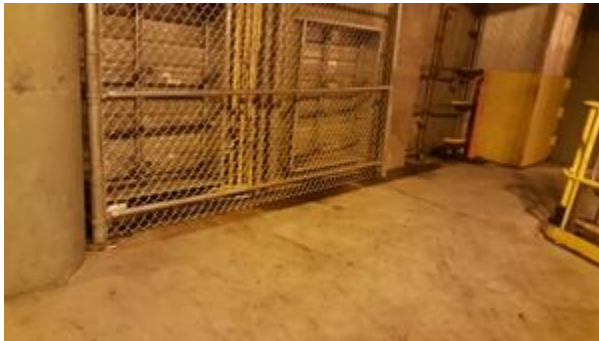
| Item   | Tenant Resource  |
|--|--|
| Compost bags                                 | <a href="http://www.cedar-grove.com/compostable/accepted-items/bags">www.cedar-grove.com/compostable/accepted-items/bags</a>   |
| Oil Operation (5 min mark)                   | <a href="http://www.youtube.com/watch?v=fzhrm5U_d_4&amp;t=322s">www.youtube.com/watch?v=fzhrm5U_d_4&amp;t=322s</a>   |
| Oil Caddy Manual                             | <a href="http://www.frontlineii.com/assets/dealer/Resource-Center/Installation-Manuals/Waste-Oil-Caddy/FRONT-229-Waste-Oil-Caddy-Instruction-Manual-ENG.pdf">www.frontlineii.com/assets/dealer/Resource-Center/Installation-Manuals/Waste-Oil-Caddy/FRONT-229-Waste-Oil-Caddy-Instruction-Manual-ENG.pdf</a> |
| Oil Caddy Parts                              | Frontline International @ 877-776-1100 or support@frontlineii.com  |
| Solid Waste Utility Account (compactor keys) | <a href="http://www.portseattle.org/Business/Airport-Tenants/Pages/Compactor-Access.aspx">www.portseattle.org/Business/Airport-Tenants/Pages/Compactor-Access.aspx</a>   |
| Not accepted at airport                      | Tenant Resource  |
| Refrigerators, coolers                       | <a href="http://www.totalreclaim.com">www.totalreclaim.com</a>   |
| Batteries, Lightbulbs, Mercury               | <a href="http://www.ecolights.com">www.ecolights.com</a><br><a href="http://www.totalreclaim.com">www.totalreclaim.com</a>   |
| Paint, Cleaners, Solvents, Broken bulbs      | <a href="https://kingcounty.gov/depts/dnrp/solid-waste/facilities/hazardous-waste.aspx">https://kingcounty.gov/depts/dnrp/solid-waste/facilities/hazardous-waste.aspx</a>  |
| Small appliances, microwaves, TVs, Computers | <a href="https://kingcounty.gov/depts/dnrp/solid-waste/programs/take-it-back/electronics.aspx">https://kingcounty.gov/depts/dnrp/solid-waste/programs/take-it-back/electronics.aspx</a><br><a href="http://www.totalreclaim.com">www.totalreclaim.com</a>  |
| What do I do with?                           | <a href="https://info.kingcounty.gov/services/recycling-garbage/solid-waste/what-do-i-do-with/Materials?cat=1">https://info.kingcounty.gov/services/recycling-garbage/solid-waste/what-do-i-do-with/Materials?cat=1</a>  |
| International Waste                          | <a href="#">Waste Management:</a> Jeffrey Norton 360-913-4877 <a href="mailto:jnorton1@wm.com">jnorton1@wm.com</a>   |



# Questions?

**Stick around for....**

- Training requests
- Program recommendations



*Stash the Trash*